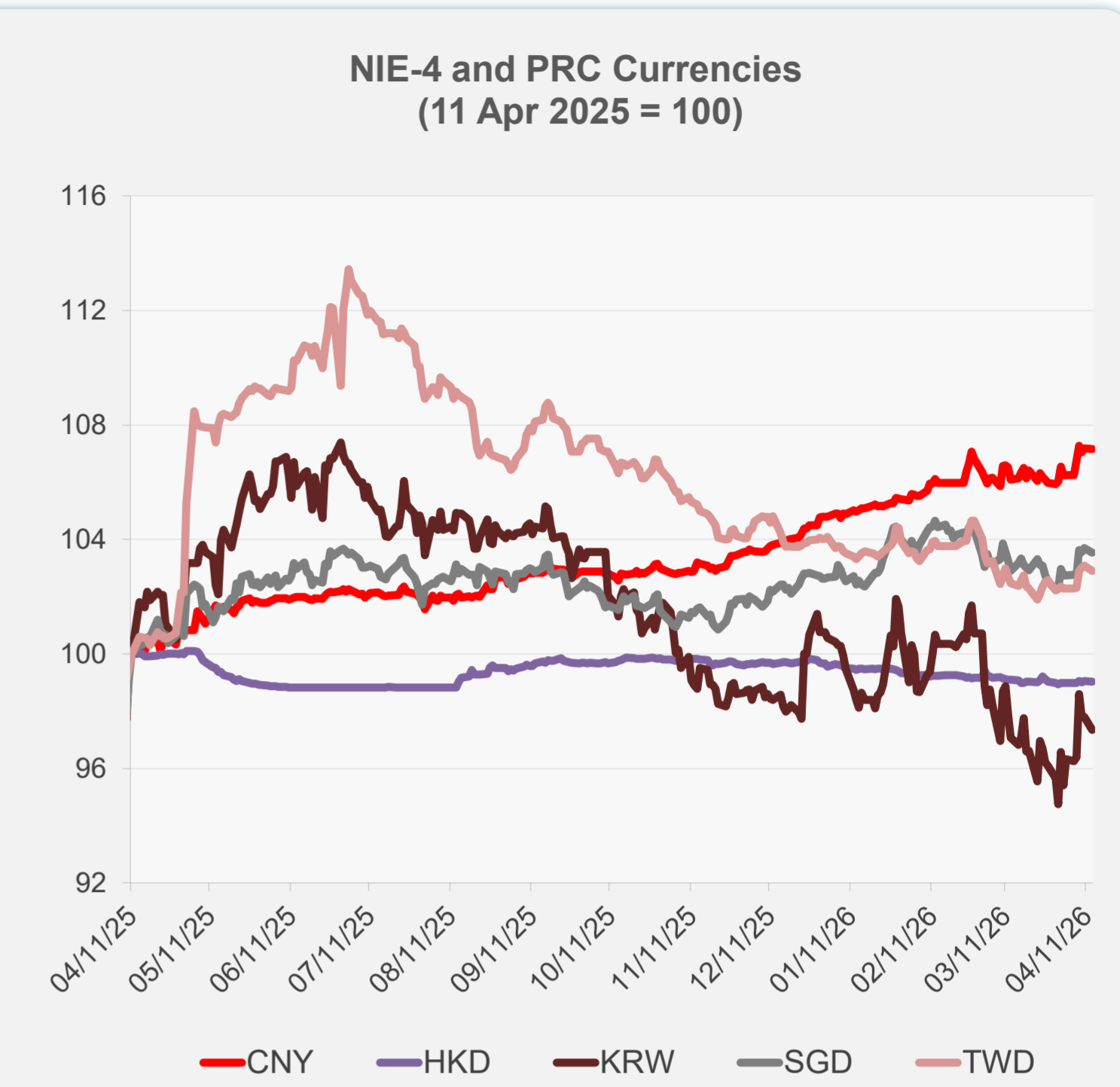
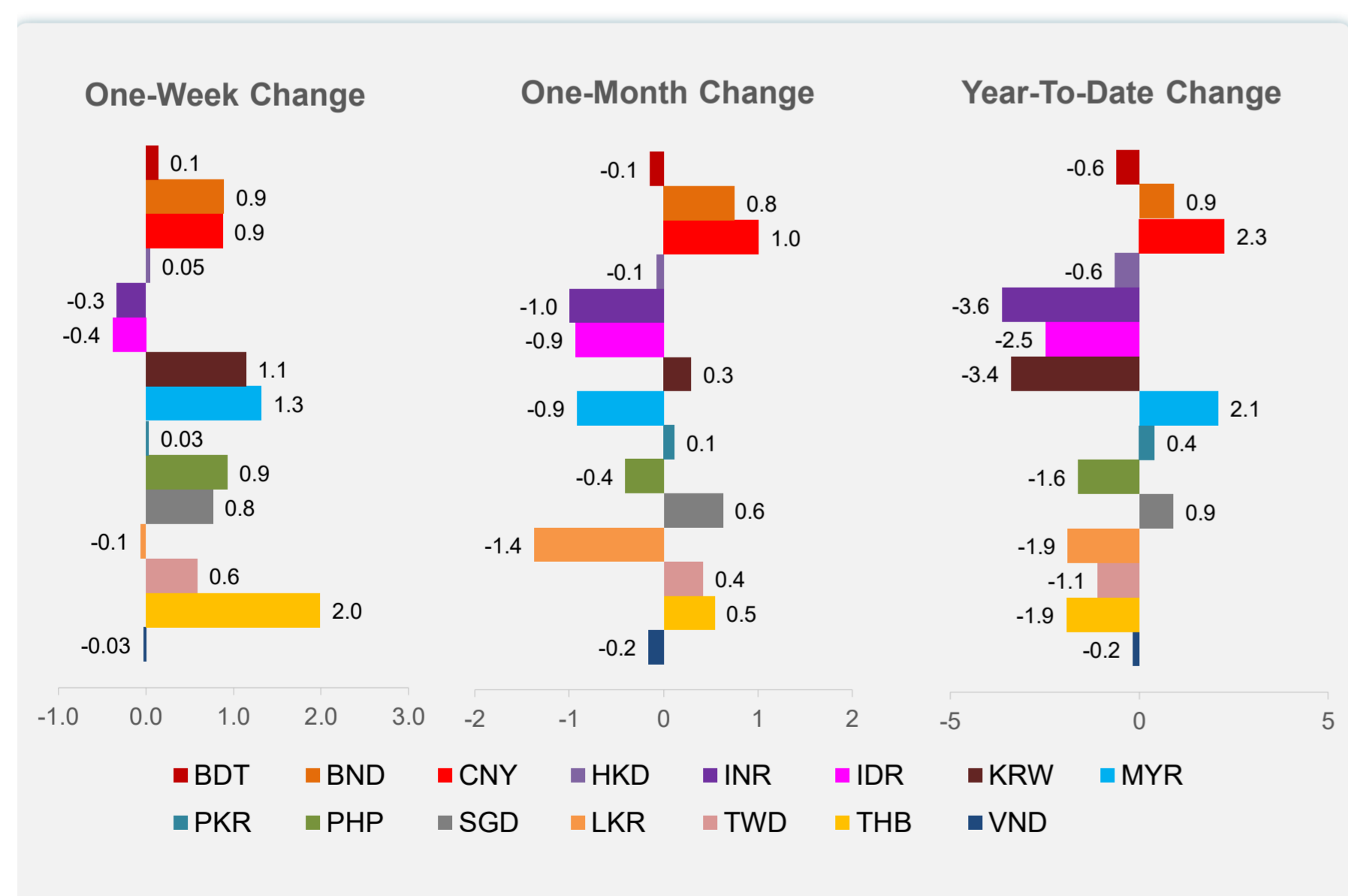
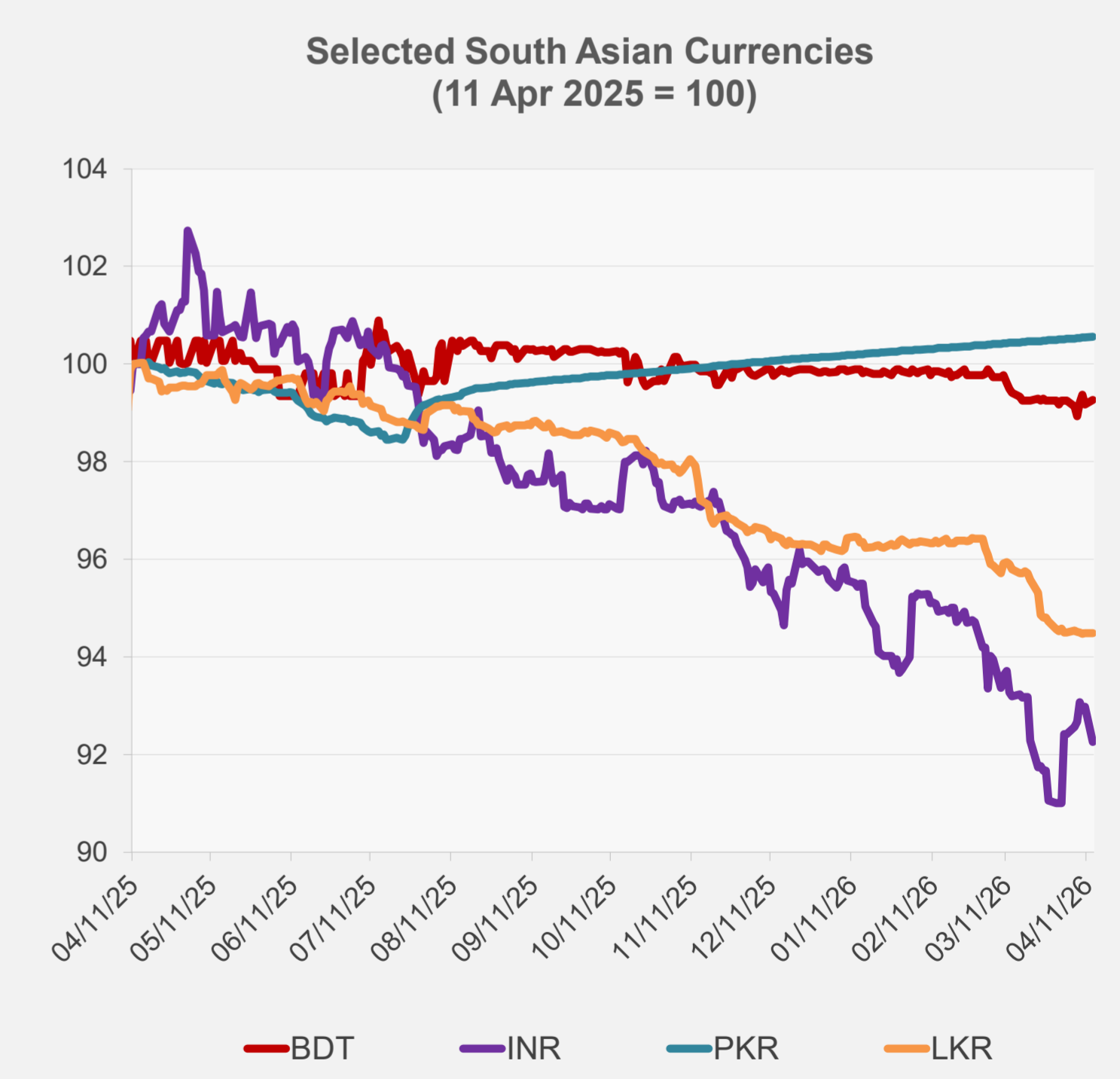
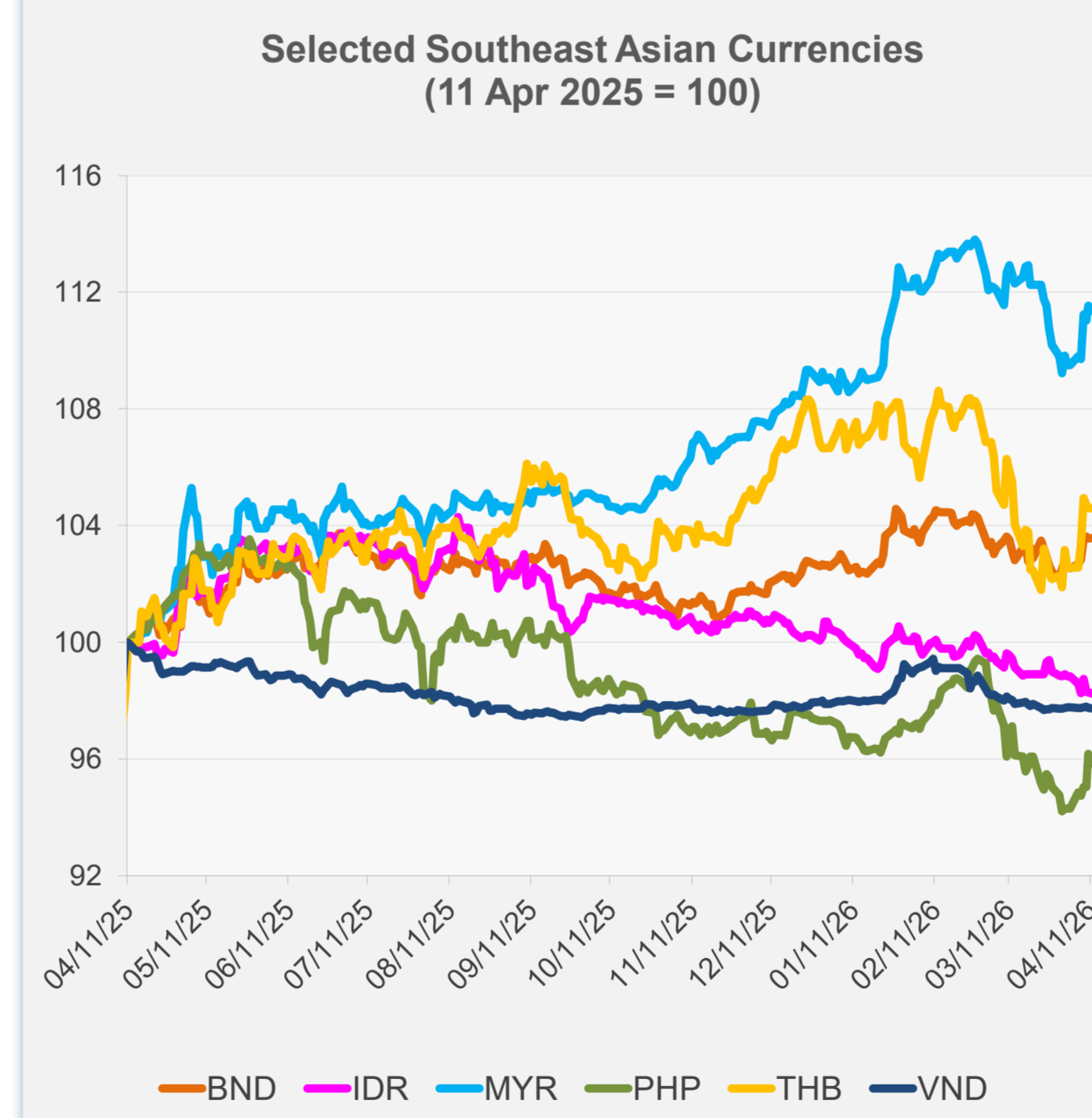


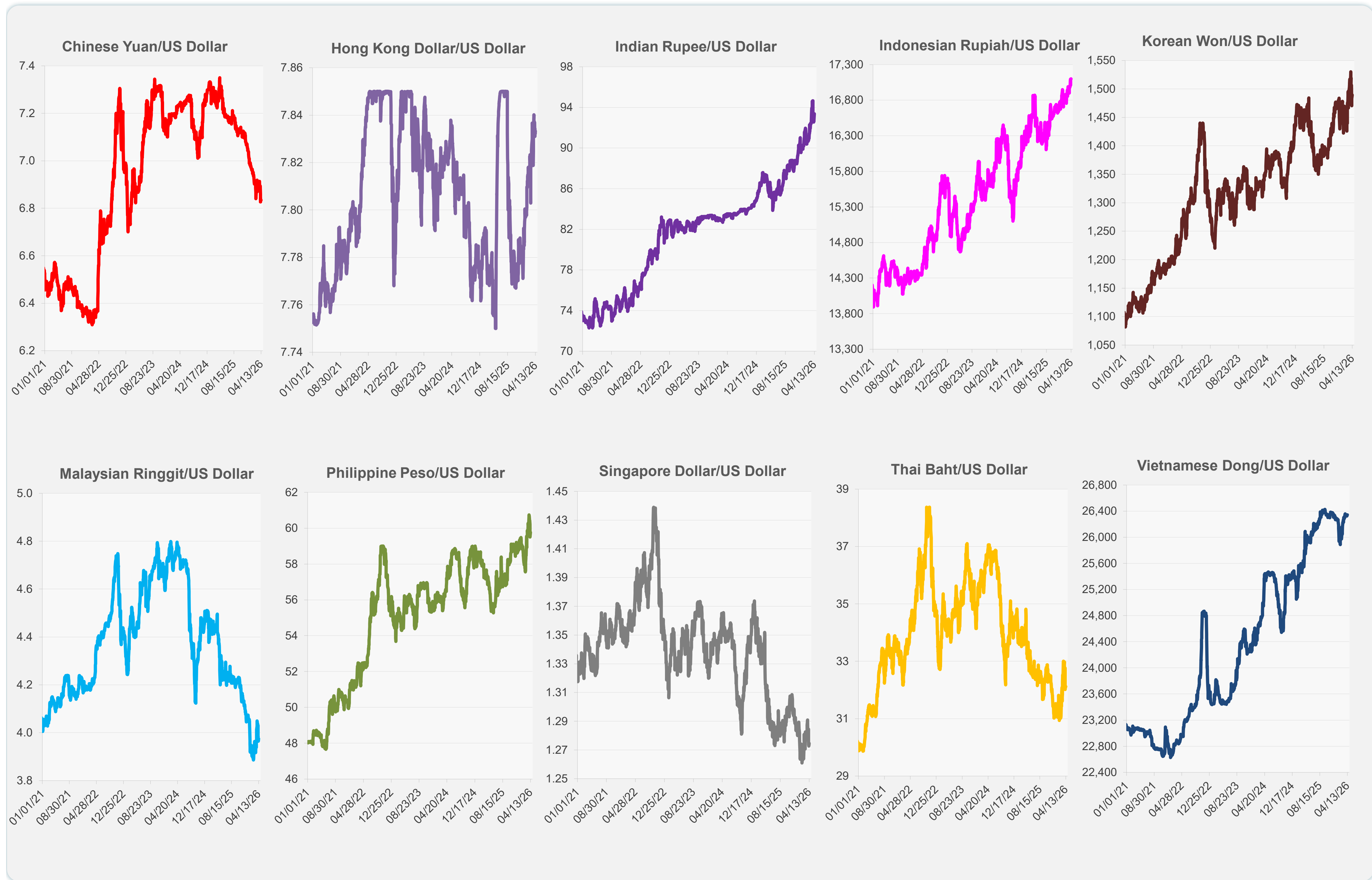
	Latest Closing	% change from Previous Day	% change from 01-Jan-26
Euro	0.85	-0.15	-0.29
Japanese yen (JPY)	159.61	-0.16	-2.27
Bangladeshi taka (BDT)	122.98	0.10	-0.59
Brunei dollar (BND)	1.27	0.03	0.92
Chinese yuan (CNY)	6.83	0.00	2.26
Hong Kong dollar (HKD)	7.83	-0.02	-0.64
Indian rupee (INR)	93.37	-0.77	-3.63
Indonesian rupiah (IDR)	17,100.00	-0.06	-2.49
Korean won (KRW)	1,489.30	-0.46	-3.38
Malaysian ringgit (MYR)	3.98	-0.25	2.09
Pakistan rupee (PKR)	278.97	0.01	0.41
Philippine peso (PHP)	59.77	-0.45	-1.61
Singapore dollar (SGD)	1.27	-0.15	0.90
Sri Lanka rupee (LKR)	315.55	0.00	-1.88
Taipei,China NT dollar (TWD)	31.79	-0.19	-1.09
Thai baht (THB)	32.12	0.00	-1.92
Vietnamese dong (VND)	26,344.50	-0.03	-0.17



NIE = Newly Industrialized Economies



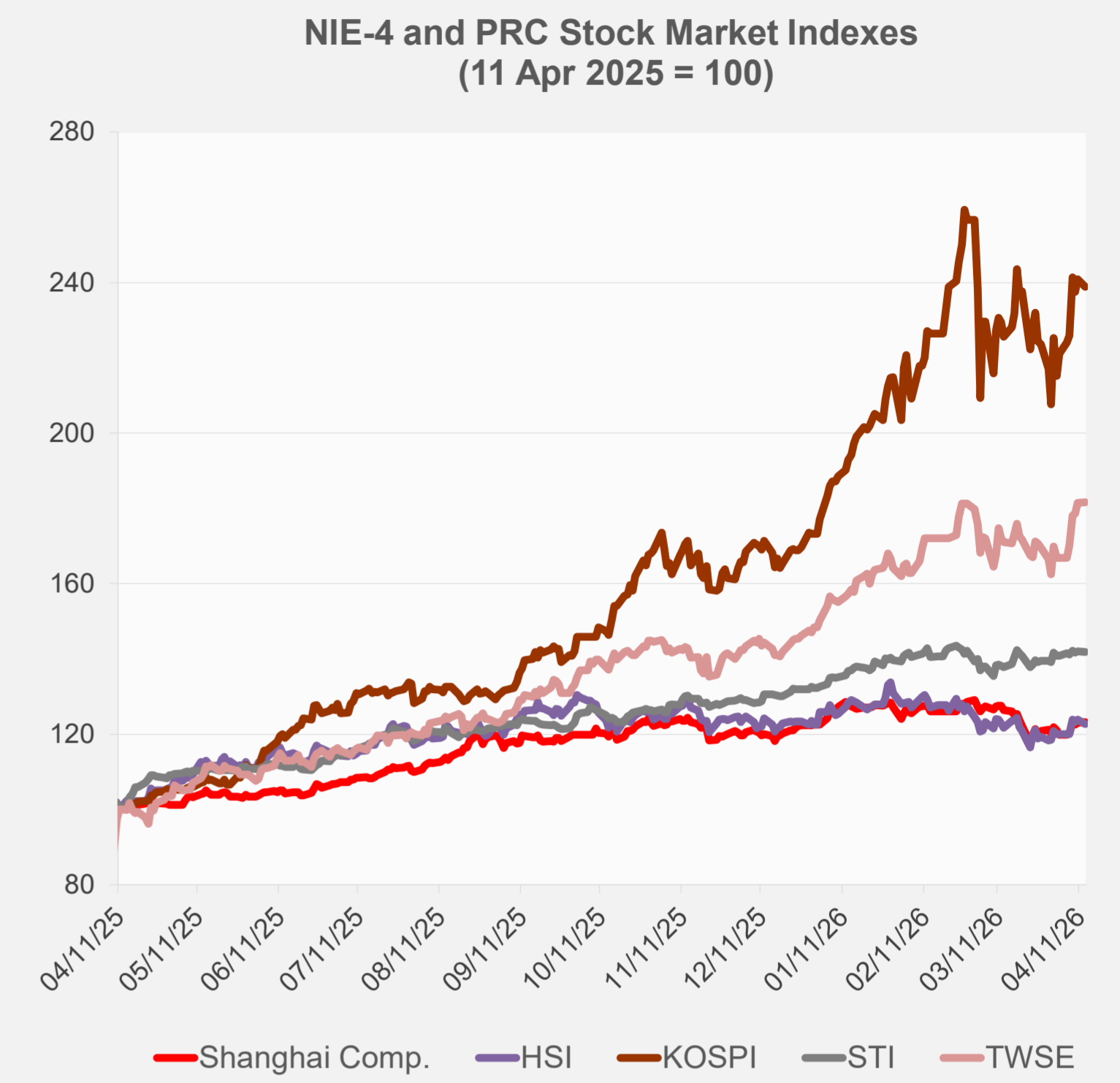
Note: Negative/Decreasing values indicate depreciation of local currency, and positive/increasing values indicate appreciation.  
Source: ADB calculations using data from Bloomberg and Haver Analytics.



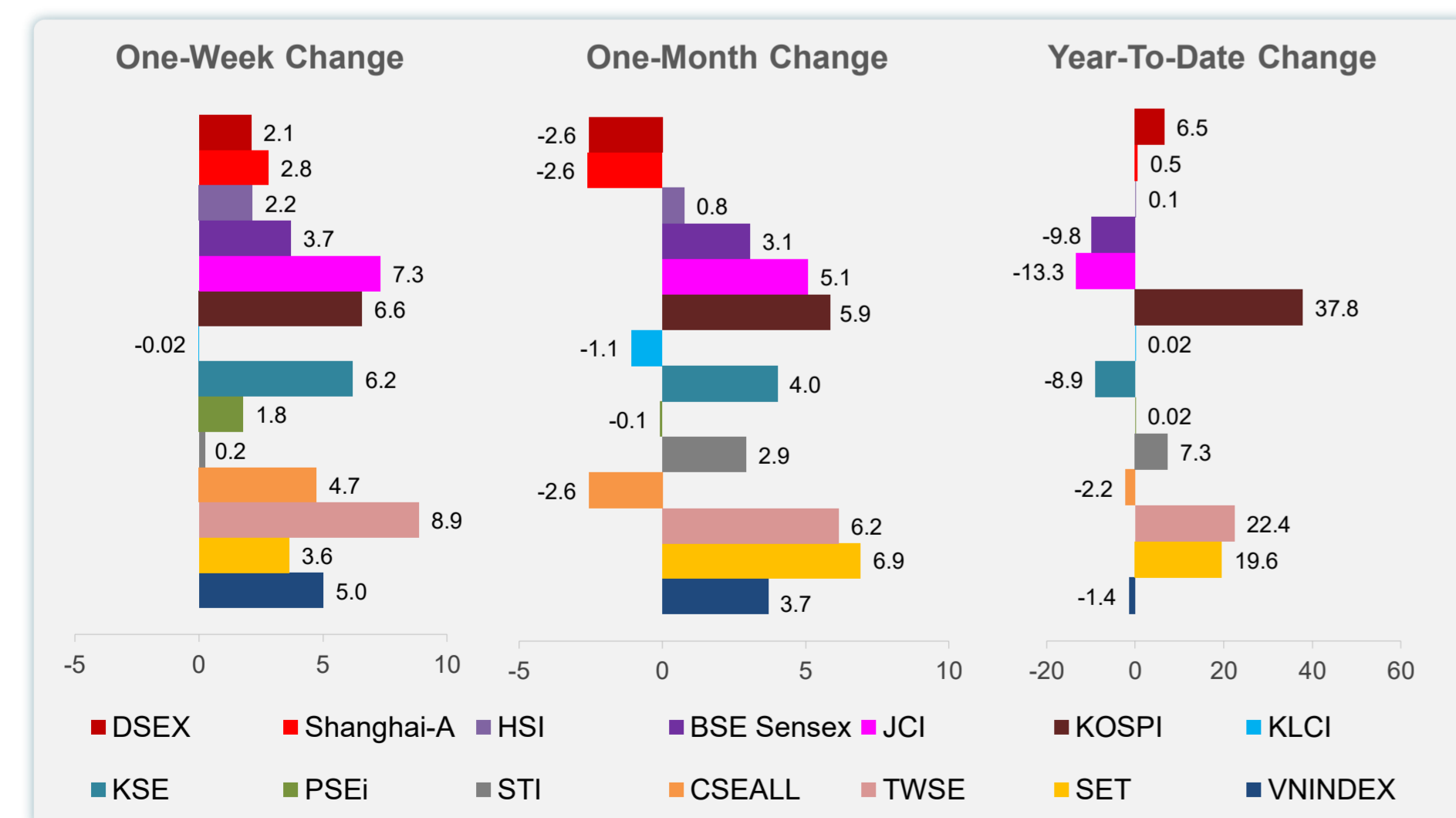
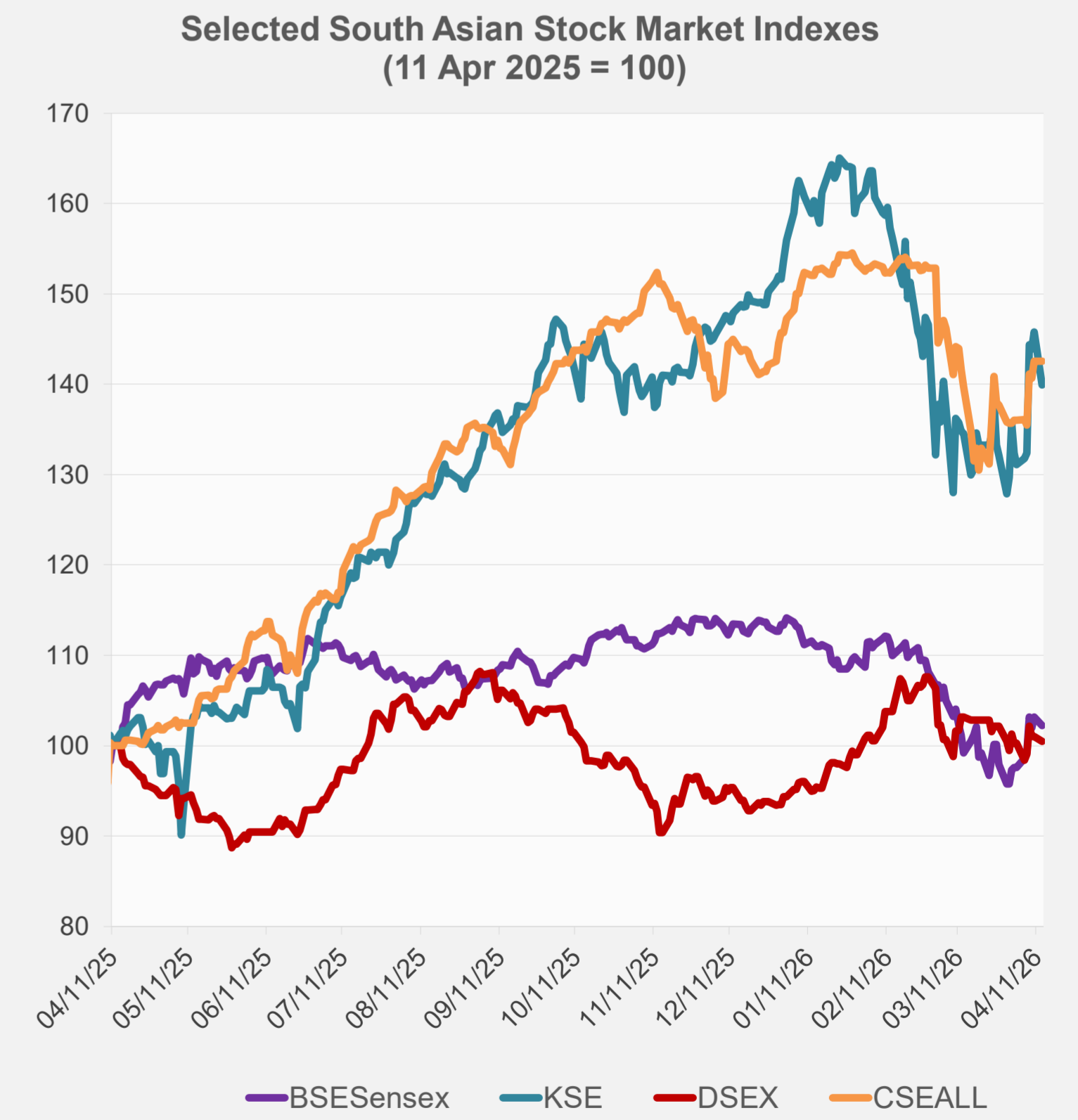
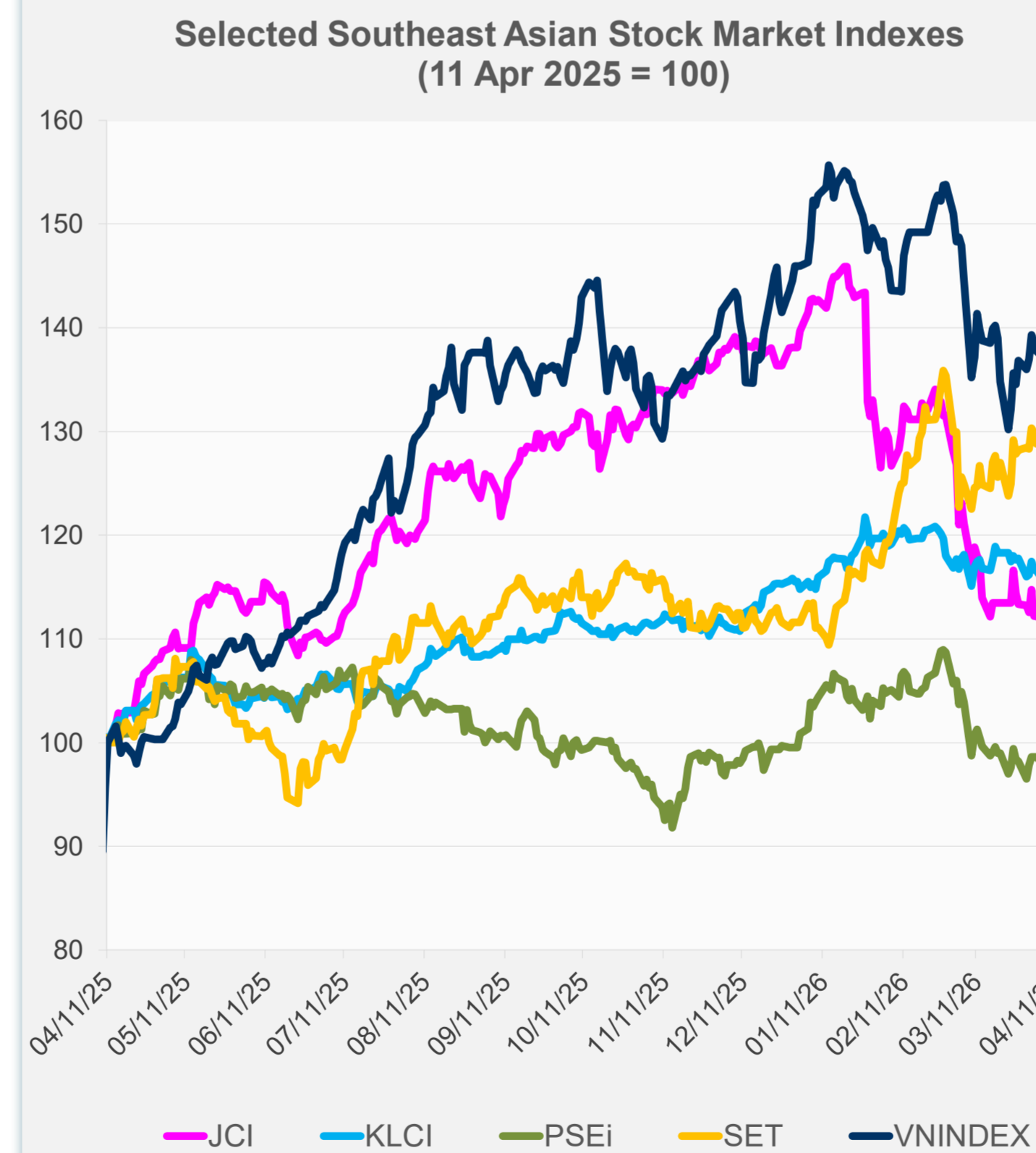
Source: Haver Analytics.

Daily Market Watch  
**STOCK INDEXES**

	Latest Closing	% change from Previous Day	% change from 01-Jan-26
US Dow Jones Ind Avg	48,218.25	0.63	0.32
US NASDAQ	23,183.74	1.23	-0.25
US S&P 500	6,886.24	1.02	0.60
UK FTSE 100	14,058.51	-0.11	24.84
EURO STOXX 50	5,905.02	-0.36	1.96
Japan NIKKEI 225	56,502.77	-0.74	12.24
Bangladesh DSEX	5,230.37	-0.52	6.51
PRC Shanghai Comp.	3,988.56	0.06	0.50
Hong Kong, China HSI	25,660.85	-0.90	0.12
India BSE Sensex	76,847.57	-0.91	-9.79
Indonesia JCI	7,500.19	0.56	-13.26
Korea, Rep. of KOSPI	5,808.62	-0.86	37.84
Malaysia KLCI	1,680.52	-0.64	0.02
Pakistan KSE 100	160,726.90	-4.02	-8.92
Philippines PSEi	6,054.05	-0.72	0.02
Singapore STI	4,984.17	-0.11	7.27
Sri Lanka CSEALL	22,128.66	0.00	-2.19
Taipei, China TWSE	35,457.29	0.11	22.42
Thailand SET	1,506.84	0.00	19.62
Viet Nam VNINDEX	1,758.96	0.51	-1.43



NIE = Newly Industrialized Economies



Sources: ADB calculations using data from Bloomberg and CEIC Data Company.

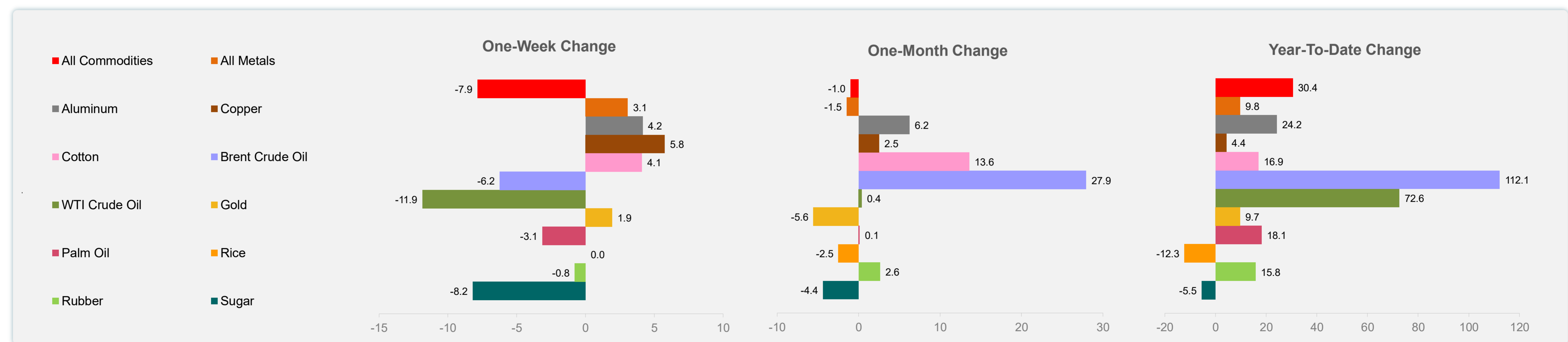
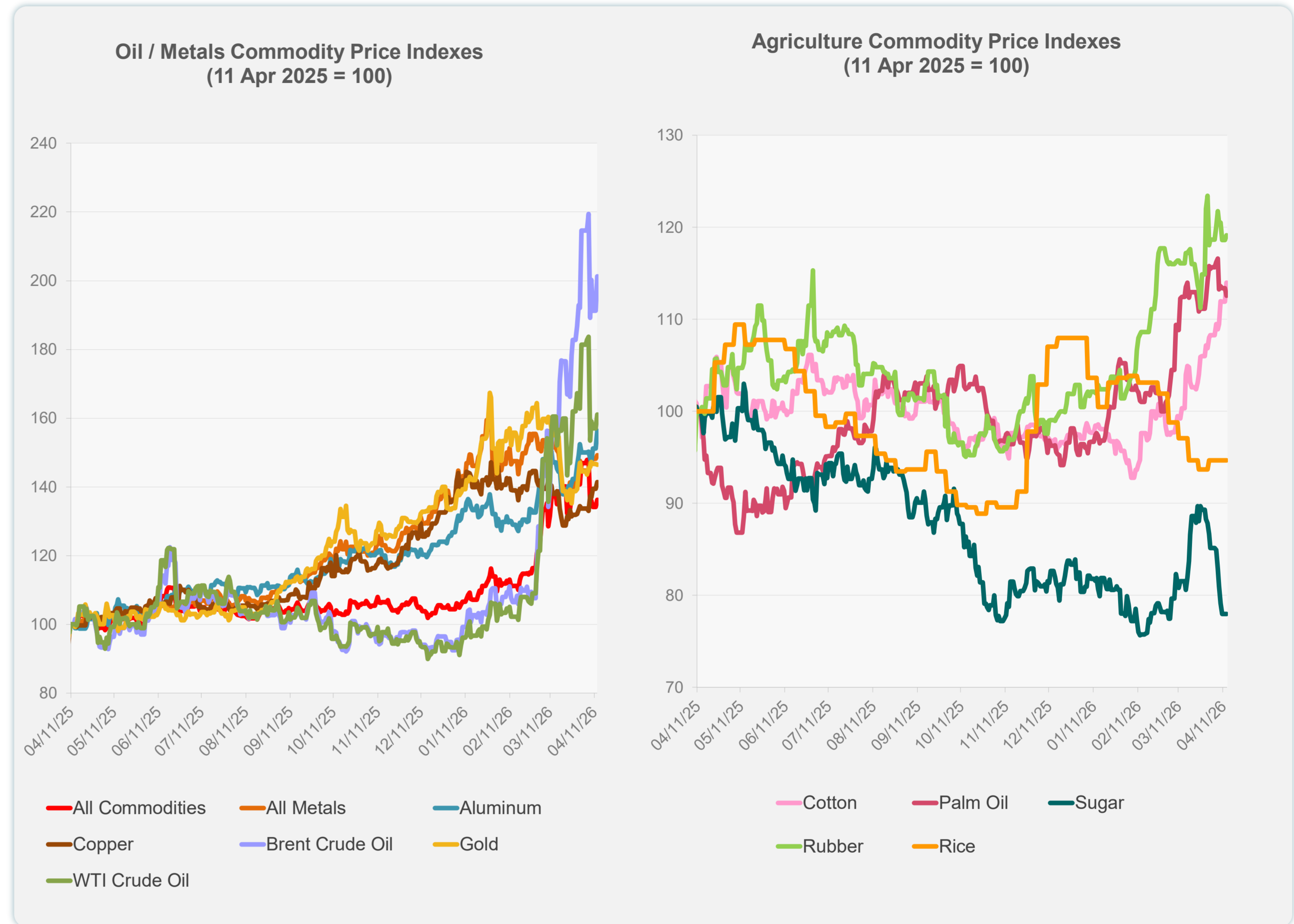


Sources: ADB calculations using data from Bloomberg and CEIC Data Company.

Daily Market Watch  
**COMMODITY PRICES**

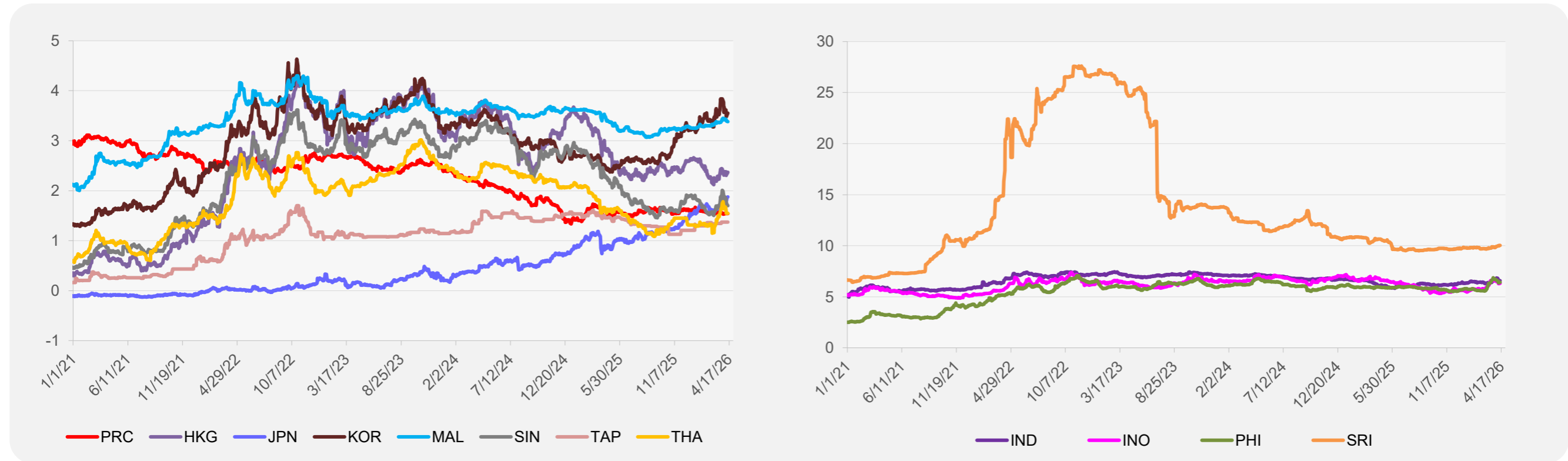
	Unit	Latest Closing	% change from Previous Day	% change from 01-Jan-26
S&P All Commodities	US\$	715.53	1.54	30.45
S&P All Metals	US\$	487.11	0.71	9.77
Aluminum	US\$/metric ton	3,686.90	3.41	24.22
Copper	US\$/metric ton	12,996.39	1.38	4.36
Cotton	US cents/lb	72.53	1.84	16.95
Brent Crude Oil	US\$/barrel	132.46	5.22	112.11
WTI Crude Oil	US\$/barrel	99.08	2.60	72.55
Gold	US\$/troy oz	4,740.31	-0.20	9.75
Palm Oil	US\$/metric tonne	1,144.46	-0.71	18.15
Rice <sup>1</sup>	US\$/metric ton	391.00	0.00	-12.33
Rubber <sup>2</sup>	US\$/kg	249.00	0.44	15.81
Sugar	US cents/lb	13.98	0.00	-5.48

<sup>1</sup> Latest closing price from 1 April 2026.  
<sup>2</sup> Singapore Exchange, Ribbed Smoked Sheet Rubber.

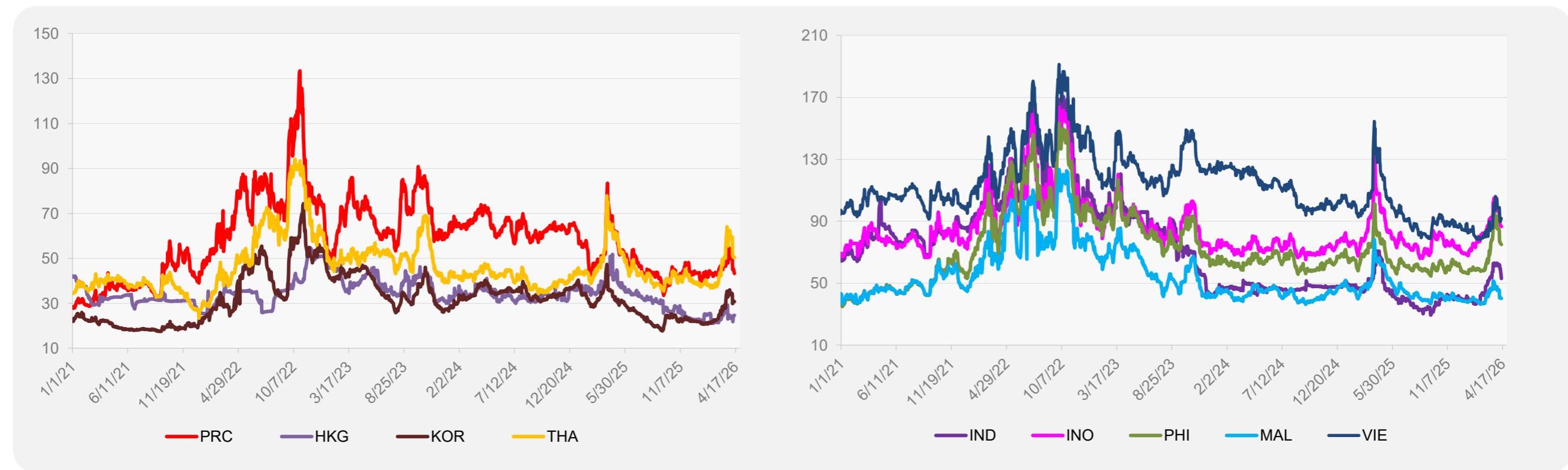


Source: ADB calculations using data from Bloomberg.

### 5-YEAR LOCAL CURRENCY GOVERNMENT BOND YIELDS (%)



### 5-YEAR CREDIT DEFAULT SWAP<sup>1</sup>



<sup>1</sup> In USD and based on sovereign bonds.  
Source: ADB calculations using data from Bloomberg.